

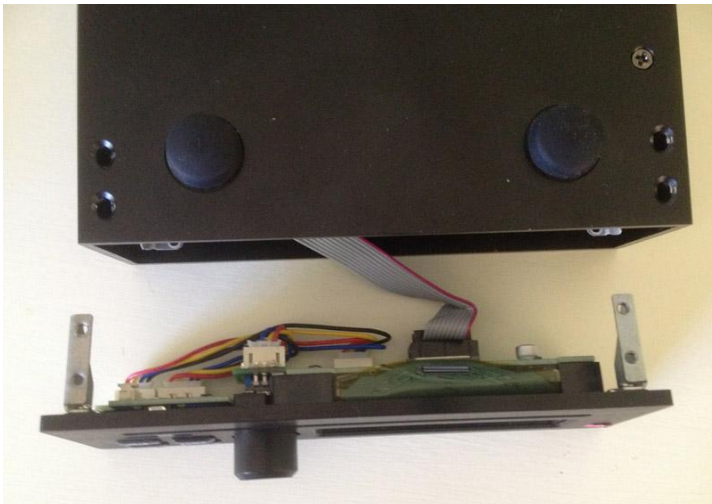
## Changing the B2's OLED display

Version 1.1 – 01/07/2018

### Disassembly:



Turn the B2 over and remove the four screws as shown in the photo above.



Slide the front panel forward far enough to disconnect the grey ribbon cable from the Display panel.

The ribbon cable connector is held into the PCB connector with some red glue (see the photo below). This should be cut and/or peeled away so the black connector shell is not pulled off the PCB when the ribbon cable is pulled away.



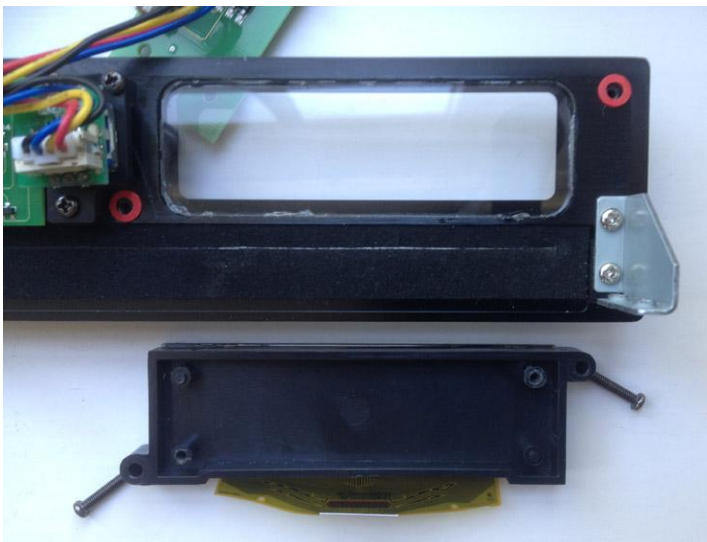
The OLED display has a flexi-ribbon cable which is held in place by a sliding retaining clip (indicated in the photo). Carefully push each side of the retaining clip towards the edge of the circuit board

(towards the bottom of the photo). You will have to hold one side whilst releasing the other as the clip tends to 'see-saw'.

Take care to not apply too much pressure as the clip will disconnect from the body of the connector.

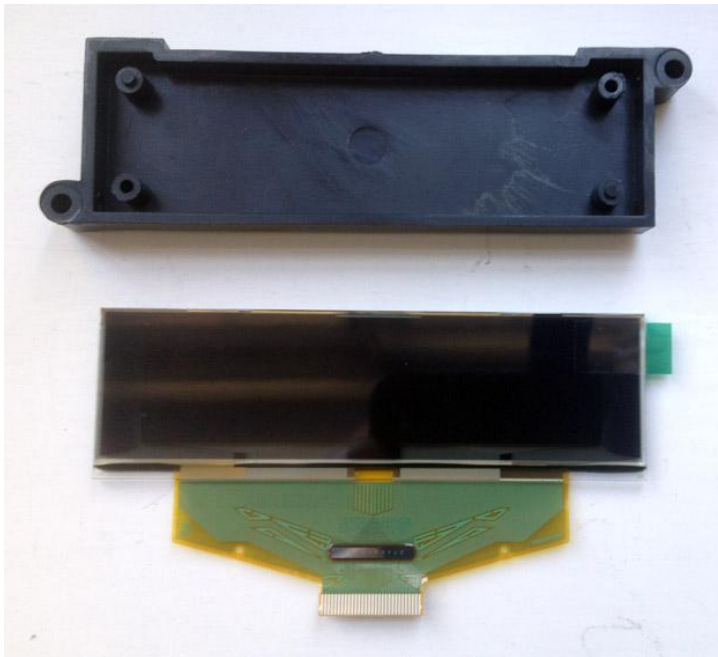


Remove the two screws holding the circuit board to the plastic bracket, remove the circuit board and release the display flexi cable.



Remove the two screws holding the plastic bracket to the front panel. Take care to retain the two red washers (if fitted), as they will need to be replaced when re-assembling.

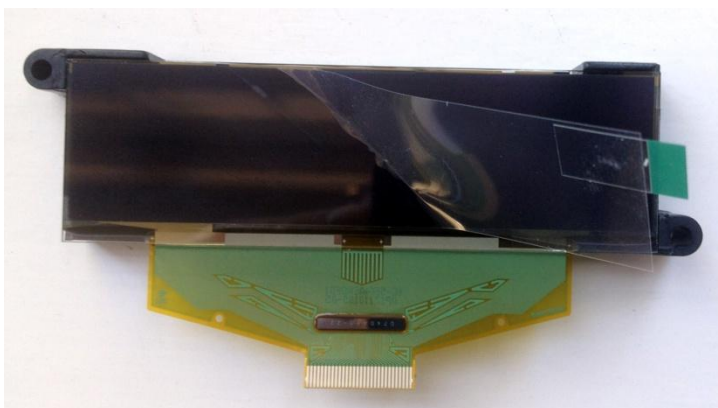
**Reassembly:**



When handling the new OLED take care not to touch the silver contacts on the display flexi cable (shown at the bottom of the photo). These are static sensitive and grease from your fingers can affect the contact material. Also the OLED is made of a thin piece of glass which is reasonably fragile.



Orientate the new plastic bracket as shown above and peel off the top layer of the double sided tape.



Carefully position the OLED into the corners of the bracket before gently pressing down on to the adhesive tape.

It will be very difficult to reposition the OLED once stuck to the tape so take care to align it correctly before sticking it down.

Peel off the protective tape from the front of the OLED.



Fit the two red washers (if fitted on your unit), align the new bracket/display assembly and fix with the two (longer) screws.



Position the circuit board and fit the two screws that hold it to the plastic bracket.

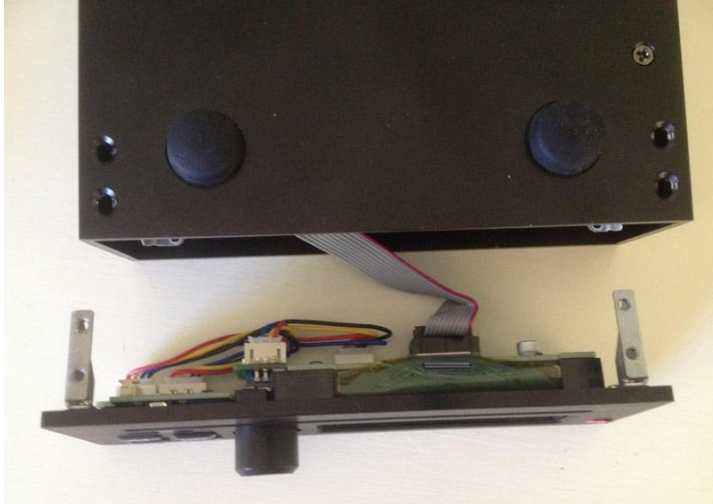


Insert the display flexi cable into the connector on the circuit board.



Check that it is fully inserted and aligned correctly – there should be an even amount of the silver contacts showing left to right.

Push the retaining clip in at both sides (towards the top of the photo). The clip will tend to 'see-saw' so you will need to push one side in and hold it whilst pushing the other side in.



Connect the grey ribbon cable to the rear of the display panel. It will only fit one way round.

Position the front panel so none of the circuit boards and/or components is touching the case and power on the B2. If the display lights and the B2 boots up normally, power off and fit the front panel to the case.



Push the front panel up to the case, so there is no gap between the front panel and the case, before tightening the four retaining screws.